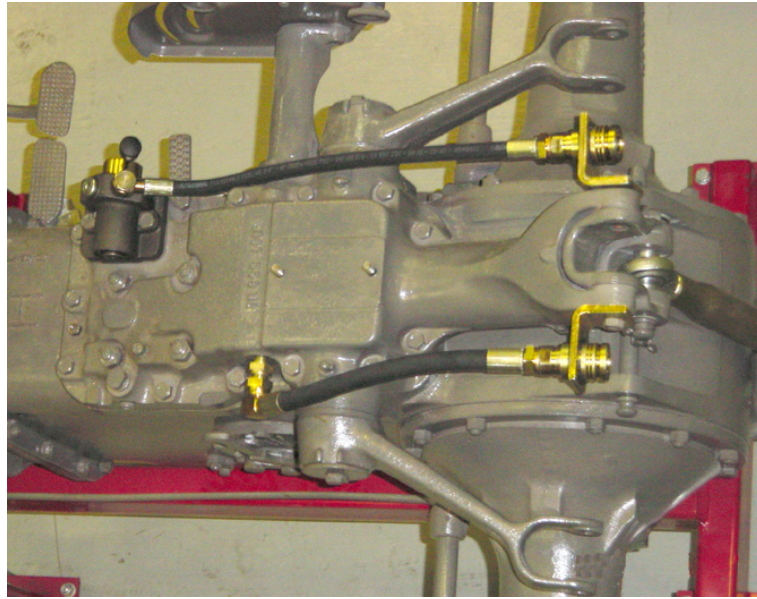


# Instruction for hydraulic outlet MF

29008 & 29009

ANV008

EN



The tractor seen from the left-hand side



29008



29009

## Pressure outlet, part number 29008

The mounting bracket that holds the quick coupling is not included. The bracket is ideally made of 3-4 mm sheet. The quick coupling of the push-pull type facilitates engaging and disengaging of the attachment.

## Return outlet, part number 29009

Dismantle the hex plug on the hydraulic cover's left-hand side for connection of the return outlet.

The supplied adapter with a tapered thread is mounted here.

The mounting bracket that holds the quick coupling is not included. The bracket is ideally made of 3-4 mm sheet. The quick coupling of the push-pull type facilitates engaging and disengaging of the attachment.



**Olsson Parts.**

Olssons i Ellös AB • Tel. +46 304-751010  
Slätthultsvägen 12 • S-474 31 Ellös  
www.olssonparts.com • order@olssonparts.com