

# Instruction for 3/2 valve

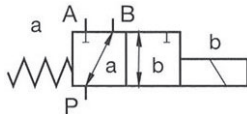
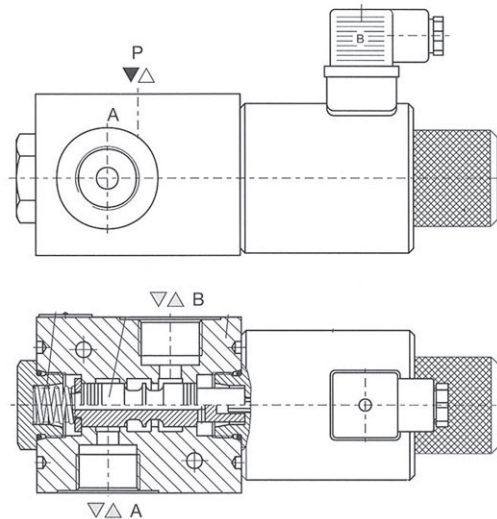
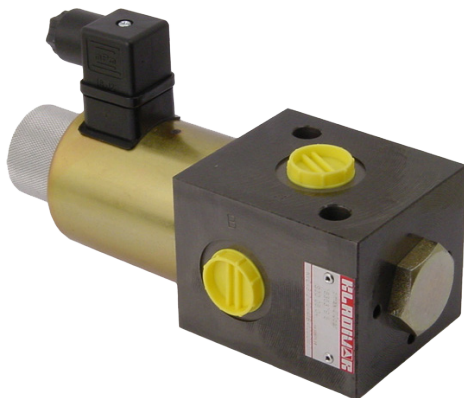
29179

ANV040

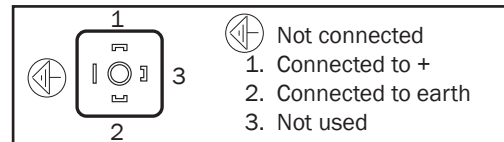
EN

3/2 valve:	Kladivar, KVC-3/210-12V-G1/2
Flow:	60 litre/min
Voltage (V):	12 V (24 V for magnet replacement)
Output (W):	45 W
Connection:	1/2"
Number of connections:	3
Pressure (max. bar):	210

For the installation of hydraulic valves, only use sealing washers that seal, not thread sealing tape, string or the like.



Unactuated magnet	P-B
Actuated magnet	P-A



2021-11-01



Olssons i Ellös AB • Tel. +46 304-751010  
 Slätthultsvägen 12 • S-474 31 Ellös  
 www.olssonparts.com • order@olssonparts.com