

Instruction for snow dozer valve

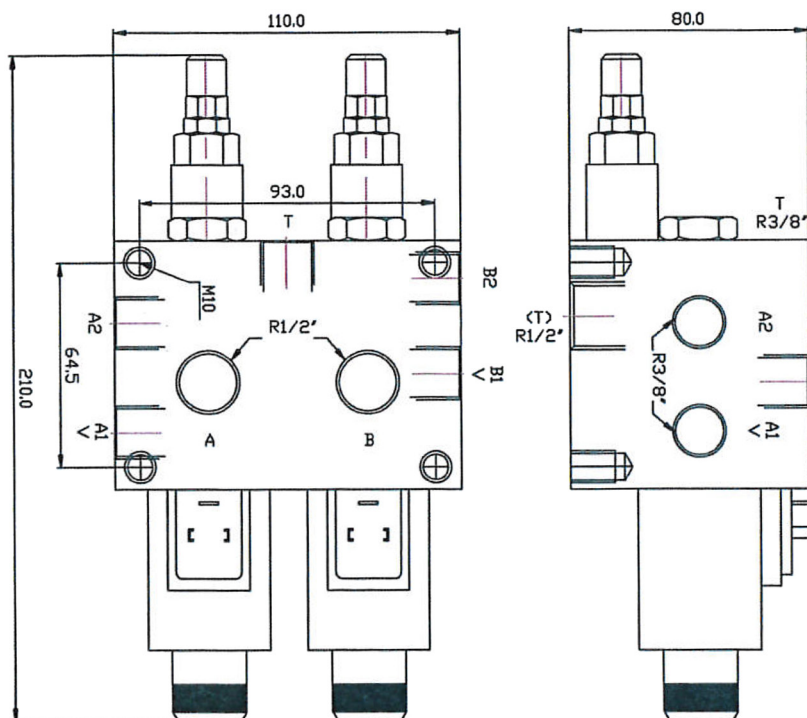
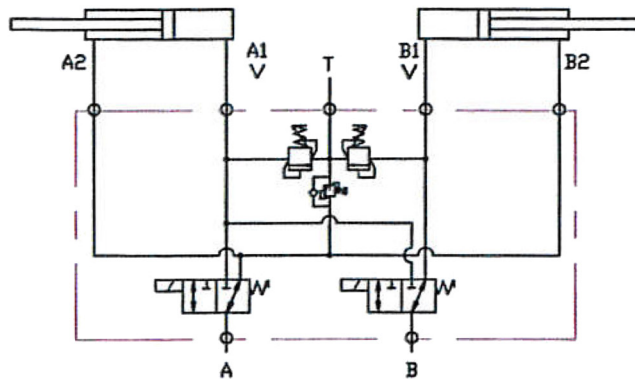
49286

ANV043

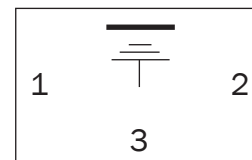
EN

Solenoid controlled 8/3 selector valve with limiter valve.

T-connection must be connected to the pressure accumulator or tank.



Voltage
12 VDC
24 VDC



Current to magnet A = diagonal function on dozer

Current to magnet B = left wing controlled

Both magnets unactuated right wing controlled

- 1 +
- 2 -
- 3 should not be connected



Olssons i Ellös AB • Tel. +46 304-751010
 Slätthultsvägen 12 • S-474 31 Ellös
 www.olssonparts.com • order@olssonparts.com

2021-11-08