

# Instruction for the clutch kit, clutch & plate

633112909 & 133060210

ANV072

EN

Clutch kit 633112909

Clutch 133060210

## Applications:

John Deere 2040S, 2140, 2650, 2850, 3040, 3050, 3140, 3350 & 3640

## Problem:

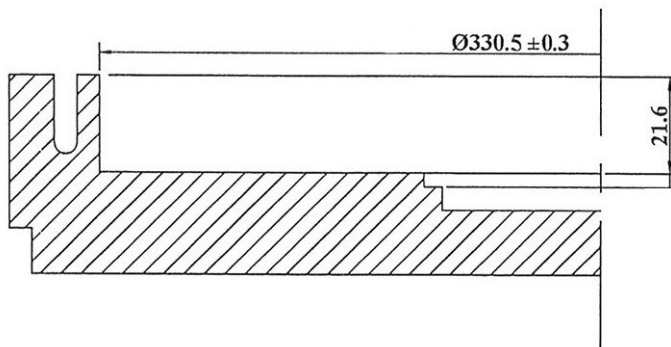
When you install one of the following parts: Clutch kit 633112909 clutch 133060210 or plate 332000210 for the first time it is necessary to machine the flywheel as shown in the drawing below.

This is to prevent the clutch plate rivets from coming into contact with the flywheel when the plate wears.

## Solution:

Machine the diameter of the flywheel's recess to  $\varnothing 194$  mm and a depth of 2 mm to make space for the clutch plate's spring centre.

The figure shows the requisite changes that need to be made on the flywheel.



2021-11-08



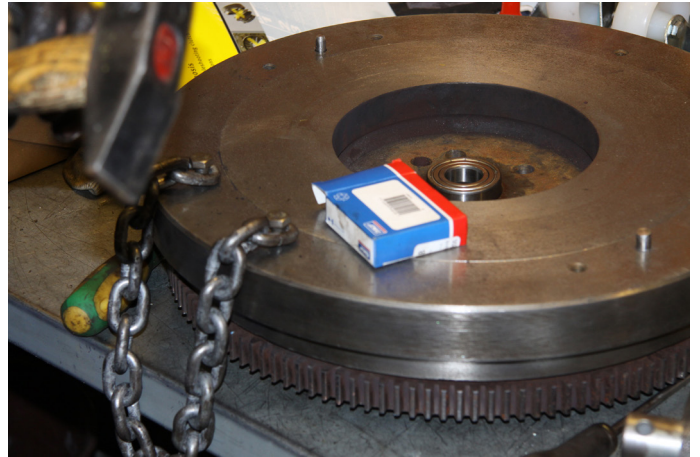
**Olsson Parts®**

Olssons i Ellös AB • Tel. +46 304-751010  
Slätthultsvägen 12 • S-474 31 Ellös  
www.olssonparts.com • order@olssonparts.com

# General instruction to replace the clutch on the tractor



Before the tractor is opened:  
Make sure that the tractor is jacked firmly and that the tractor can be adjusted vertically during reassembly.



After dismantling the flywheel must be machined according to the manufacturer's instructions. Fit a new flywheel bearing.



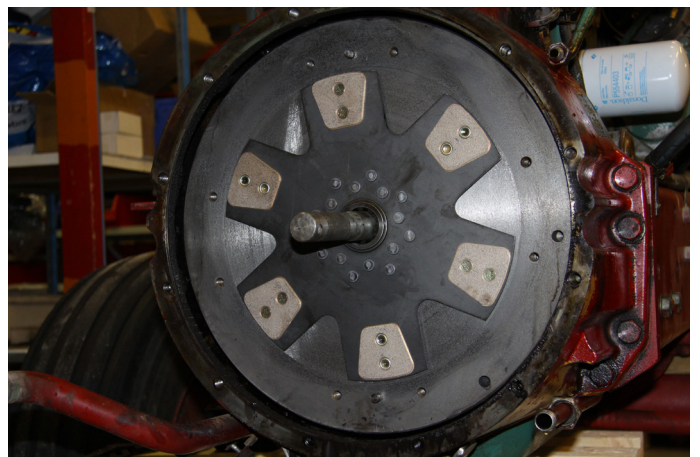
Ensure that there is no leakage around the crankshaft.



Check the release bearing mechanism with regard to wear and damage.  
Replace the release bearing. Check that the bearing holder slides easily. Check that the splines are undamaged. Clean the pin's splines and lubricate moderately with special grease.



Check that the new plate slides easily on the pin's splines.



Make sure to centre the plate when assembling the clutch.

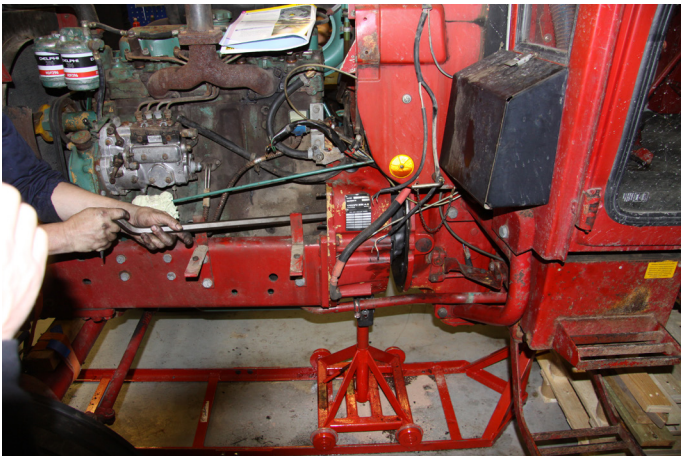




Do not forget to remove the transport locks when dismantling the clutch.



One type of transport lock.



Exercise care to ensure the tractor's both halves are centred in height and laterally when assembling. If this is not the case, installation damage can occur the plate and clutch.



Make sure that the splines on the gearbox's input pin and the power take-off's drive slide easily in position on the clutch. Do not force the tractor halves with the bolts! Damage during installation is not covered by the warranty. The position of the power take-off's position is adjusted here when the power take-off is in the engaged position (independent position). This applies to mechanical power take-offs.

If the tractor has hydraulic release bearings, the correct type of hydraulic fluid must be used otherwise the seals will be damaged.

Exercise care when adjusting the pedal play once the installation is completed.

**NOTE: This is general advice. First and foremost make sure to follow each tractor's workshop manual.**