

# General instruction for assembly tool for the cassette seal in the water pump

66341

ANV094

EN

This assembly tool facilitates installation of the cassette seal when renovating the water pump.

## Cartridge seal



The shaft must be mounted in the pump housing before the seal is fitted.

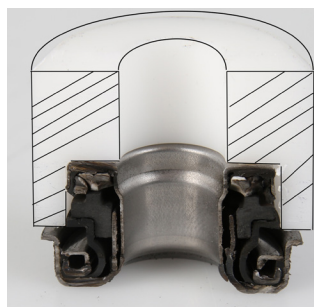
The cartridge seal must be assembled with a tool that is included in certain repair sets, see figure 2.

The tool compresses the seal by about 2-3 mm and you then press the seal down into the right position, see figure 3. Once the seal is assembled, the longitudinal position of the shaft must not change. Remember that the counterhold must be placed on the shaft when the impeller is fitted. The tool and seal are shown in cross section.



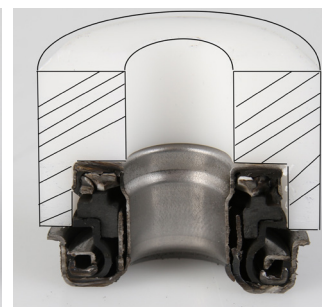
(Cartridge seal in cross section)

(2)



Unaffected height 21 mm

(3)



Compressed height 19 mm

2021-04-19



**Olsson Parts.**

Olssons i Ellös AB • Tel. +46 304-751010  
Slätthultsvägen 12 • S-474 31 Ellös  
www.olssonparts.com • order@olssonparts.com