

Hydraulic cover valve instruction

116808

ANV148

EN

To activate and forward oil to the external valve, the depth control on the tractor's agricultural lift must be moved to the uppermost position.

NOTE:

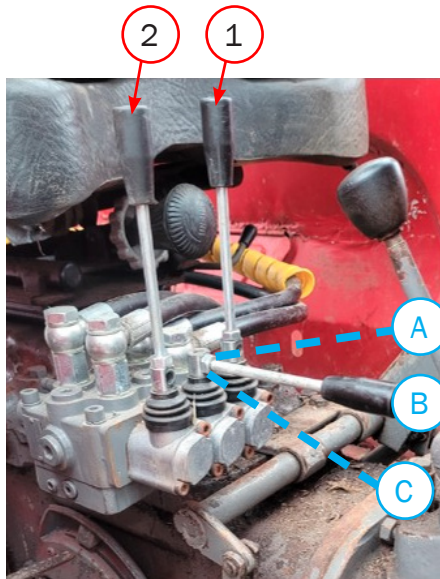
In cases when you want the agricultural lift's lower link arms in a specific position, the depth control lever must be moved to the top first after the center lever has been switched over.

Position A



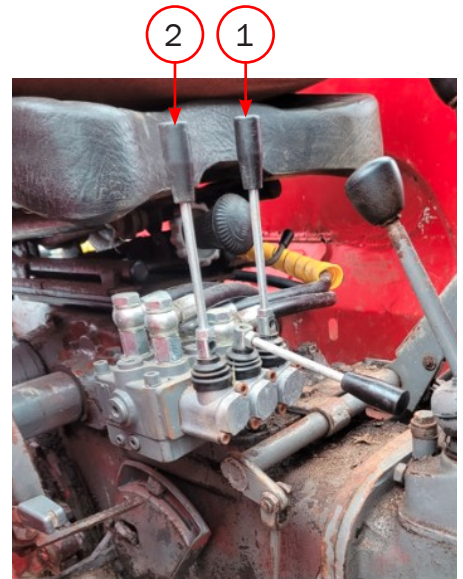
Agricultural lift: position A
Reversing lever
(center lever)

Position B



Center lever in position B:
Lever 1: Single acting
Lever 2: Double acting

Position C



Center lever in position C:
Lever 1: Double acting
Lever 2: Double acting

2024-04-26



Olssons i Ellös AB • Tel. +46 304-751010
Slätthultsvägen 12 • S-474 31 Ellös
www.olssonparts.com • order@olssonparts.com