

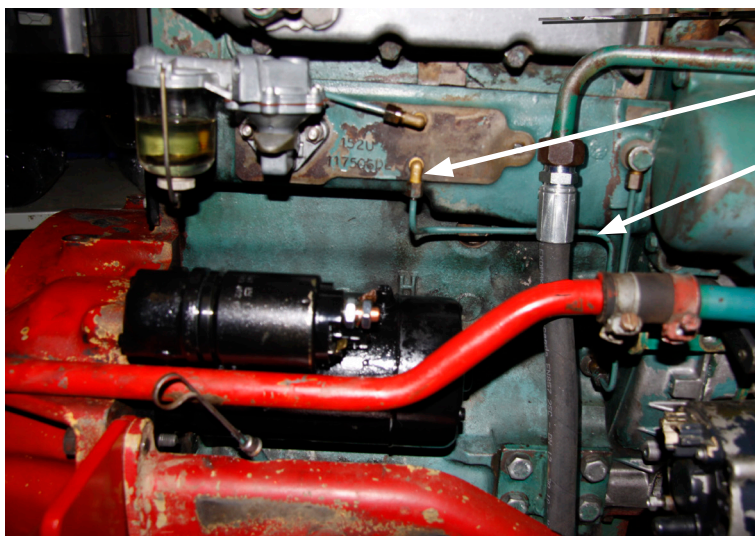
# Instruction for starter motor

44218-88

ANV182

EN

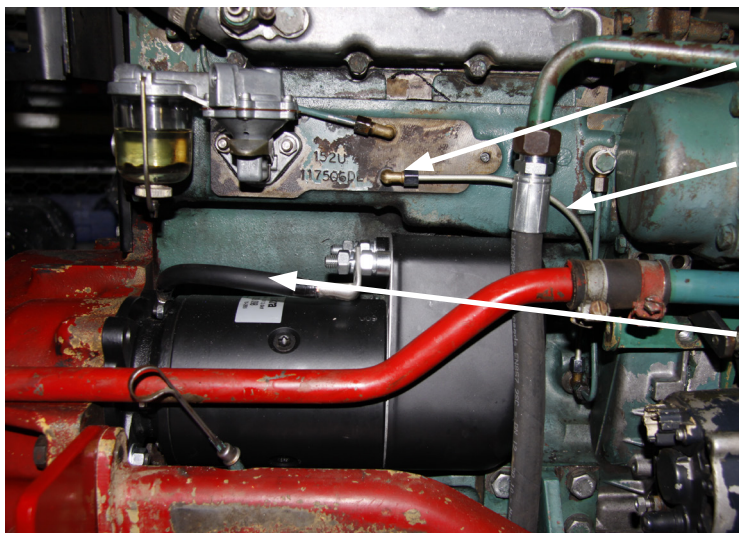
Original design



Connection elbow

Oil pressure pipe

New design



New connection elbow

New oil pressure pipe

Earth cable



- Dismantle the original oil pressure pipe and connection elbow.
- Fit a new connection elbow that has thread sealant.  
Direct the pipe connection on the elbow as illustrated.
- Fit the new oil pressure pipe.
- Fit the starter motor and at the same time route the supplied earth cable between the starter motor's fastening bolt and the earth terminal on the starter (as illustrated).

2021-11-08



**Olsson Parts.**

Olssons i Ellös AB • Tel. +46 304-751010  
Slätthultsvägen 12 • S-474 31 Ellös  
www.olssonparts.com • order@olssonparts.com