

# Instruction for clutch John Deere

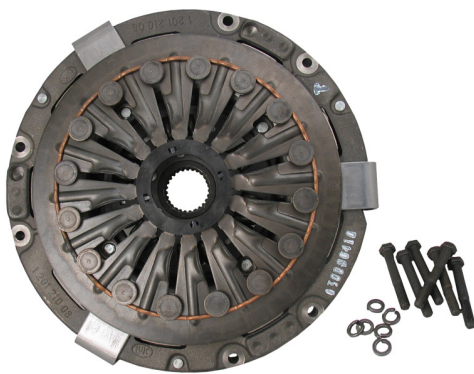
130000410

ANV190

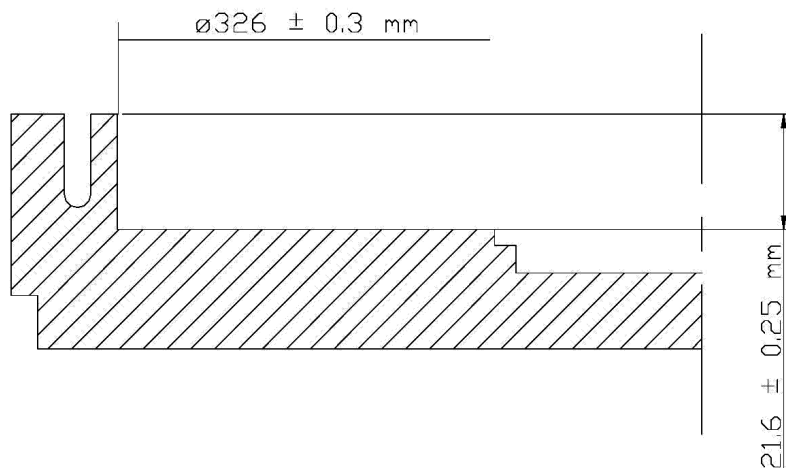
SV

Make sure the flywheel is machined to  $326 \pm 0.3$  mm and to a depth of  $21.6 \pm 0.25$  mm. The clutch must be equipped with 6 x 3 / 8 "UNC x 2 3/4" bolts (these are included).

**130000410**



**130000420**



2021-11-08



**Olsson Parts**

Olssons i Ellös AB • Tfn 0304-751010  
Slätthultsvägen 12 • 474 31 Ellös  
www.olssonparts.com • order@olssonparts.com