

Instruction for power steering kit

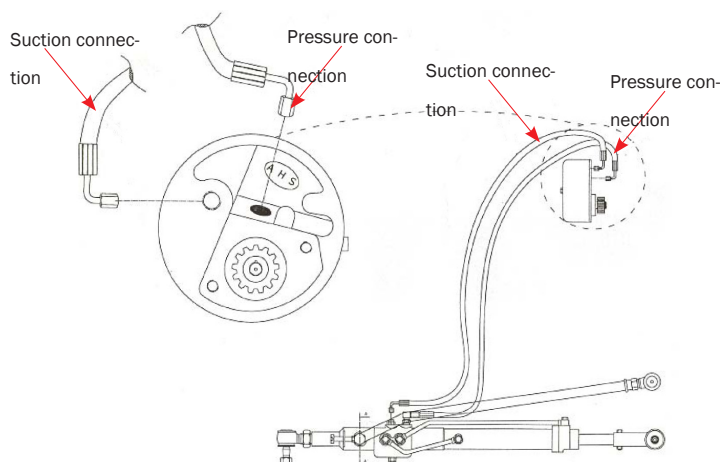
39512 and 39513

ANV194

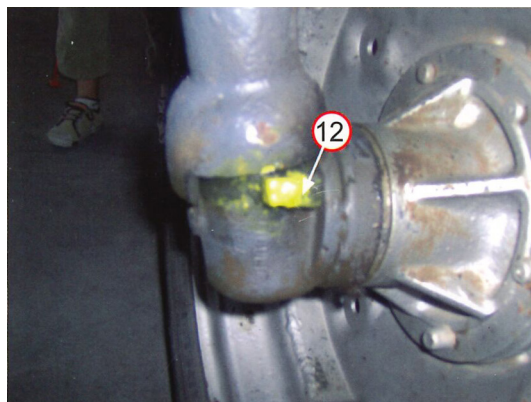
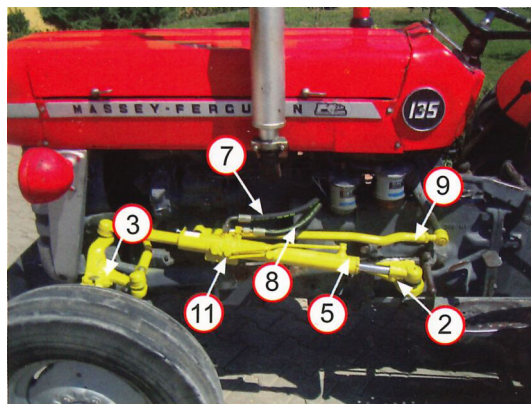
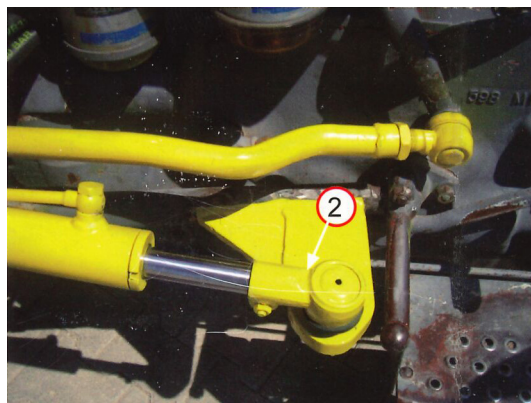
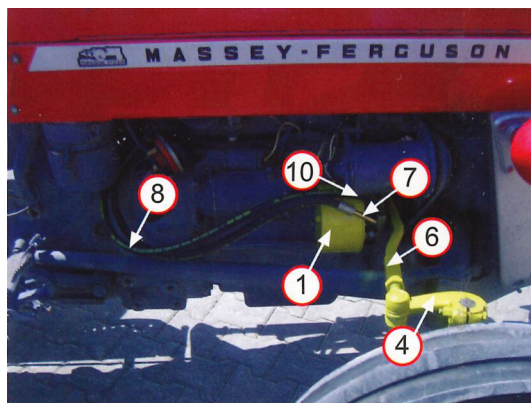
EN

1. Fit the hydraulic pump.
2. Weld the bracket on the pivot stay.
3. Fit the double steering arm on the left-hand side (it is adjusted to fit the original spindle axle).
4. Fit the single steering arm on the right-hand side (it is adjusted to fit the original spindle axle).
5. Fit the steering cylinder (valve and cylinder).
The distance between the centre of the steering joints must be 79 cm in the retracted position.
6. Fit the cross stay. Now adjust the front wheel setting.
Adjust after installation to 8 mm for the front wheels.
The distance between the centre of the steering joints must be 98 cm.
7. Fit the pressure hose.
8. Fit the suction hose.
9. Fit the steering stay. The distance between the centre of the steering joints must be 73 cm.
10. After assembly fill with ATF oil, start the engine and check the oil level. Top up if necessary.
11. The pressure relief valve is already adjusted.
12. 10x10 mm limiting bars should be welded on the right and left-hand spindle joint.
13. Check and retighten the bolted joints and hoses if necessary after a period of operation.

NOTE: Pipe to the crankcase ventilation must be replaced by a rubber hose as the pipe hits the transverse stay. In addition, this is a non-original power steering kit designed for models without a cab, which is why fastening against the cab is not described. It may differ between different cab types and require modification!



Schematics:



2021-11-08



Olssons i Ellös AB • Tel. +46 304-751010
Slätthultsvägen 12 • S-474 31 Ellös
www.olssonparts.com • order@olssonparts.com