

# Instruction for round pumping system with series coupling

45073

ANV202

EN

For the installation of hydraulic valves, only use sealing washers that seal, not thread sealing tape, string or the like. Make sure you know whether the valve block must be constant pressure connected, series connected or just have a pure return to the tank. Do not confuse these installation methods. If there is a pressure limiter, this must be adjusted to the right pressure.

Valve block:	
Flow:	90 litre/min
Max. pressure:	250 bar
Pressure relief valve:	Set to 185, adjustable between 160-200 bar
Max counter pressure in return end:	10 bar
Outlet:	1/2", T 3/4"
Temp. working range:	-15 °C to +80 °C
Filtering:	60-90 µm
Recommended oil:	Mineral-based oil
Operation:	Prepared for wire

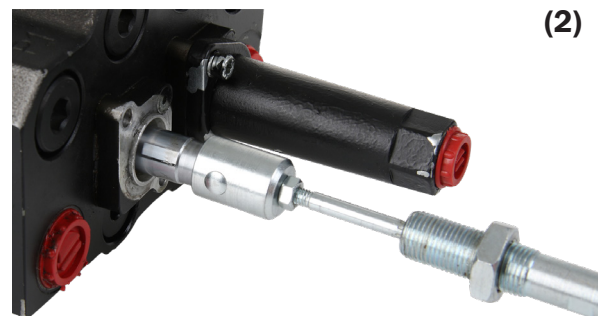
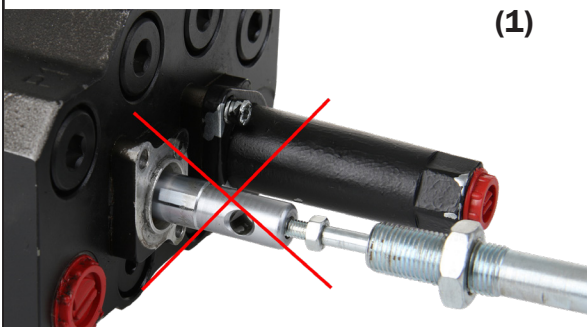
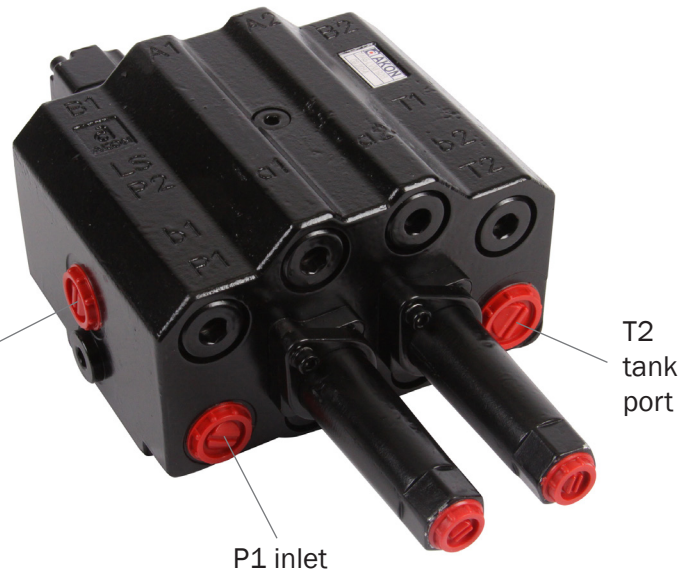


Flow on to e.g. agricultural lift  
NOTE: Must be connected

Port	Used for
A1	Raise the loader
B1	Lower the loader
A2	Tilt up
B2	Tilt down

B1

P2 alternative inlet



The wire must not be connected directly to the valve coil (figure 1) without first screwing in the sleeve and then connected to the valve coil (figure 2)

2021-11-08



Olssons i Ellös AB • Tel. +46 304-751010  
Slätthultsvägen 12 • S-474 31 Ellös  
www.olssonparts.com • order@olssonparts.com