

# General instruction for the repair kit for the water pump and pumps without a belt pulley ANV207

EN

In our repair sets there are two different types of seals, carbon ring types and cartridge seals. Cartridge seal type (1) seals against the shaft and carbon ring type (4) seals against the impeller.

## Cartridge seal

(1)



The shaft must be mounted in the pump housing before the seal is fitted.

The cartridge seal must be assembled with a tool that is included in certain repair sets, see figure 2.

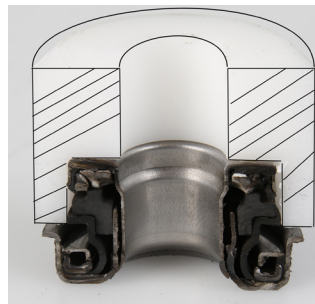
The tool compresses the seal by about 2-3 mm and you then press the seal down into the right position, see figure 3. Once the seal is assembled, the longitudinal position of the shaft must not change. Remember that the counterhold must be placed on the shaft when the impeller is fitted. The tool and seal are shown in cross section.

If the tool is not included in the repair set, you should make a tool of e.g. a tube and washer so that the seal does not break during assembly.



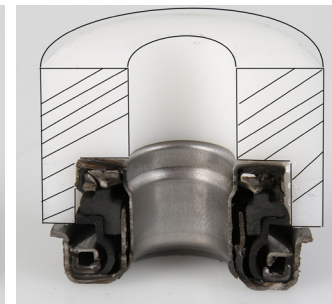
(Cartridge seal in cross section)

(2)



Unaffected height 21 mm

(3)



Compressed height 19 mm

2021-11-08



# Carbon ring seals

(4)



Different variants of carbon rings

(5)



The seal has a visible carbon ring, see figure 5.

On pumps with carbon ring seals, the seal can be fitted before the shaft.

The impeller's sealing face can be a cast surface or covered by a Teflon washer. If a cast surface, it must be completely flat and free from rust and dirt, see figure 6.

The impeller can be preassembled on the shaft, see figure 7.

When installing the seal in the pump housing, you must not press on the visible carbon ring as it cracks easily.

(6)



(7)



Shaft with impeller

